



**CHILLING PERFORMANCE**  
**24 Hrs. x 365 Days**

**Developing on the promise  
of cost efficient, CFC free,  
Industrial and Commercial Chiller Units**

**DRYcool Systems India (P) Ltd**

C-34, Sector-63, Noida - 201 307, Gautam Budh Nagar (U.P.), INDIA

## CAPACITY - 5 TR AIR COOLED WATER CHILLER

DWCS/DSG/83 - SS AIR COOLED

### PHYSICAL DATA

Cooling Capacity	kcal/h		15750
	BTU/h		62600
	Nominal Capacity	RT	5
	Outlet Water Temp.	°C	10
	Condensation Temp.	°C	50
Power Supply			3PH-415V-50HZ
Max Amp		A	12
Total Power Input		HP	7
Power Supply Cable Diameter		mm <sup>2</sup>	AWG 11
Safety Protection Device			Overload, Inverse Phase, High/Low Pressure, Water Flow, Water Level & Anti-Freeze Protection
Refrigerant	Type		R410A
	Charge	Lbs	4.0
Compressor	Start Mode		Direct start
	Type		Scroll Type
	Qty		1
	HP		8
	RLA (Rated Load Amp)		8.0
	LRA(Locked Rotor Amp)		62
Fan	Qty		1
	Type		External Rotar Axial Fan
	Power	HP	0.97×1
	Current	A	1.2×1
	LRA	A	7×1
	Volume Air Flow	CFM	5176
Condenser	Type		MCHE
	Subcooling	K	2
	Heat Rejection	BTU/h	117048
Evaporator	Type		SS304 Shell and Cu Tubes
	Superheat	K	7
	Heat Rejection	BTU/h	62,600
	Cooled Water Flow	GPM	14
	Water Pressure Drop	PSI	12
Energy Adjust Mode			100%-0%
Throttling Device	Mode		thermal expansion valve
Pipe	Water Outlet		MNPT 1"
	Water Inlet		MNPT 1"

Tel.: +91-0120-4246651 • Cell No. : 98111-27340, 98111-60920

E-mail : dcsipl@hotmail.com / vatsal.verma@drycoolchillers.com • CIN : U29192DL1999PTC100034

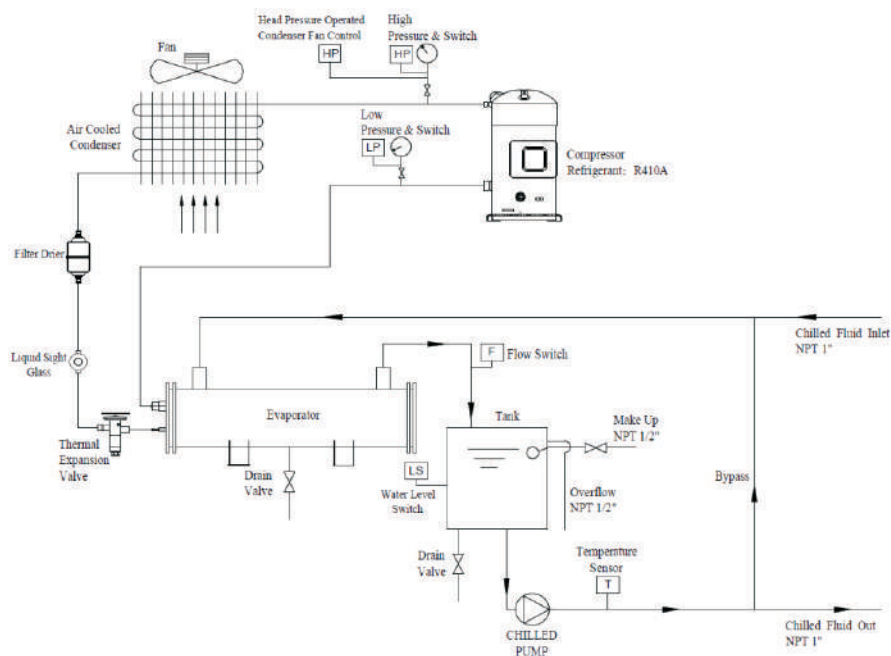
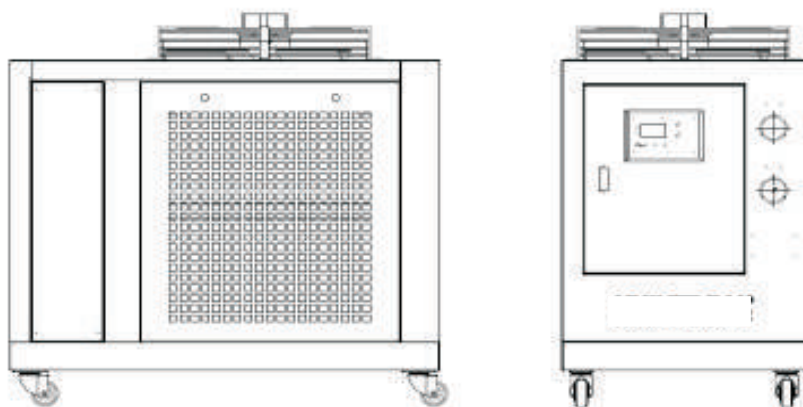
[www.drycoolchillers.com](http://www.drycoolchillers.com)

**TOLL FREE CUSTOMER CARE NO. 9811657548**

Water Pump	Flow	LPM	52
	Head	PSI	40.6
	LRA	A	6.6
	Power	HP	0.75
Water Tank	Capacity	LTR.	100
Sound Pressure at 1 meter	DBA		68
Programming Controller	Display	LCD display	
	Controller	microcomputer controller	
	Temp Control Range °C	+41 ~+95	
	Temp Control Accuracy °C	±3.6	
Dimensions	inches (LxWxH)		47×27×46
Weight	KG		170(For Reference)

## NOTES:

- 1 Cooling capacity based on 5°C(41°C) leaving coolant and 35°C(95°C) ambient air.  
Chilled water work allowed temperature range: 5 °C~35°C (41°F ~95°F).
- 2 Chilled water in and out temperature difference: 3 °C ~ 8°C (5.4°C ~ 14.4°C);  
Allowed ambient temperature range: -20 °C ~ 40°C (-4°C ~ 104°C).
- 3 Power supply: 3PH-415V-50HZ , Allowing the voltage fluctuate ±10%, allow phase voltage difference ±2%, Allow the frequency range ±0.2Hz.



## GA DRAWING

### CAPACITY - 5 TR AIR COOLED WATER CHILLER

DWCS/DSG/83 - SS AIR COOLED

DATE : 11/06/2023

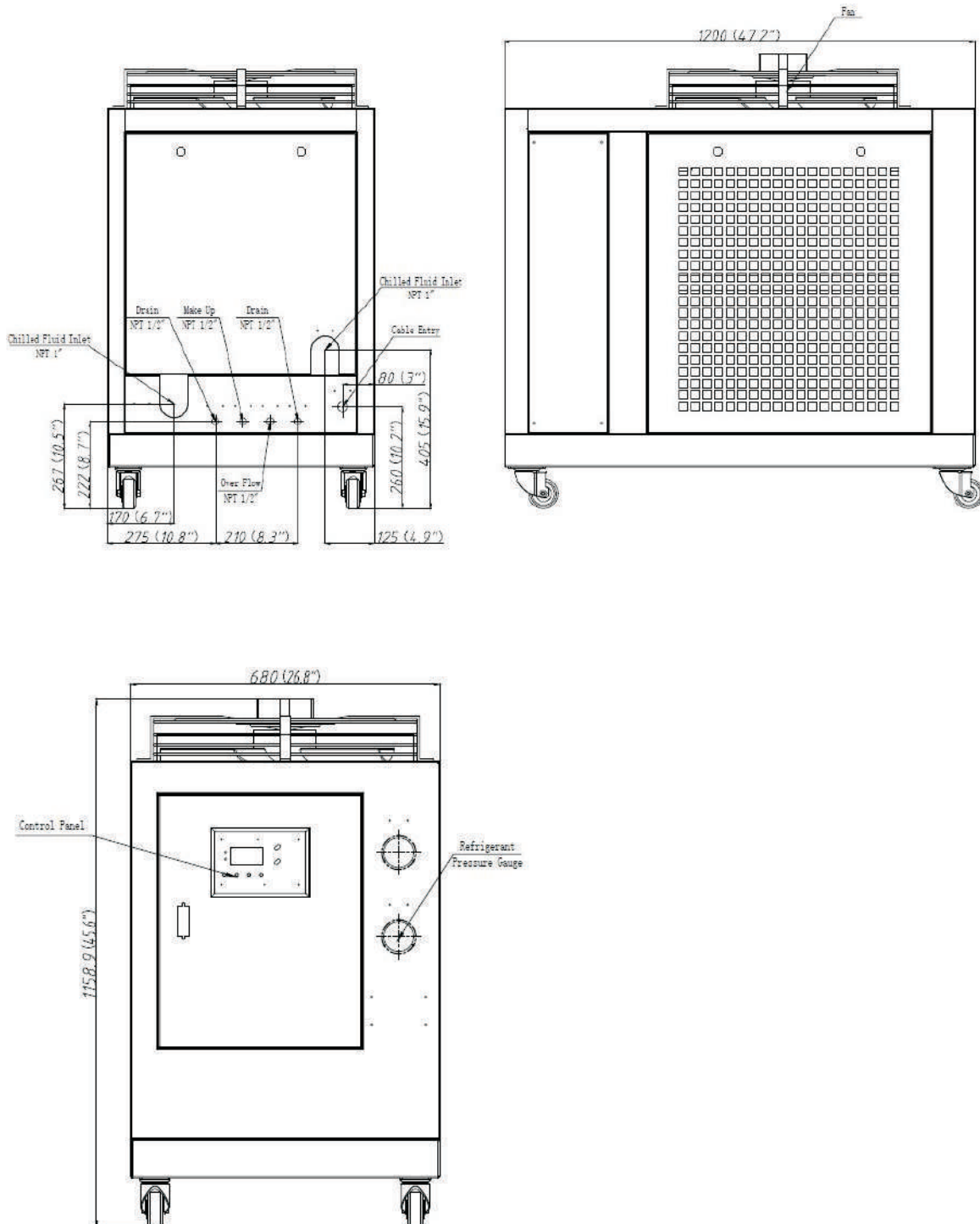
SIGN

DRN Kapil Sharma

DSGN

CHKD Vatsal Verma

APPD





## CAPACITY - 10 TR AIR COOLED WATER CHILLER

DWCS/DSG/258 - SS AIR COOLED

### PHYSICAL DATA

Cooling Capacity	kcal/h		31500
	BTU/h		125200
	Nominal Capacity	RT	10
	Outlet Water Temp.	°C	10
	Condensation Temp.	°C	50
Power Supply			3PH-415V-50HZ
Max Amp		A	24
Total Power Input		HP	18
Power Supply Cable Diameter		mm <sup>2</sup>	AWG 11
Safety Protection Device			Overload, Inverse Phase, High/Low Pressure, Water Flow, Water Level & Anti-Freeze Protection
Refrigerant	Type		R410A
	Charge	Lbs	10.0
Compressor	Start Mode		Direct start
	Type		Scroll Type
	Qty		1
	HP		15
	RLA (Rated Load Amp)		16.7
	LRA(Locked Rotor Amp)		125
Fan	Qty		1
	Type		External Rotar Axial Fan
	Power	HP	1.13x1
	Current	A	1.3x1
	LRA	A	8x1
	Volume Air Flow	CFM	7000
Condenser	Type		MCHE
	Subcooling	K	2
	Heat Rejection	BTU/h	162410
Evaporator	Type		SS304 Shell and Cu Tubes
	Superheat	K	7
	Heat Rejection	BTU/h	125,200
	Cooled Water Flow	GPM	28
	Water Pressure Drop	PSI	12
Energy Adjust Mode			100%-0%
Throttling Device	Mode		thermal expansion valve
Pipe	Water Outlet		MNPT 2"
	Water Inlet		MNPT 2"

Tel.: +91-0120-4246651 • Cell No. : 98111-27340, 98111-60920

E-mail : dcsipl@hotmail.com / vatsal.verma@drycoolchillers.com • CIN : U29192DL1999PTC100034

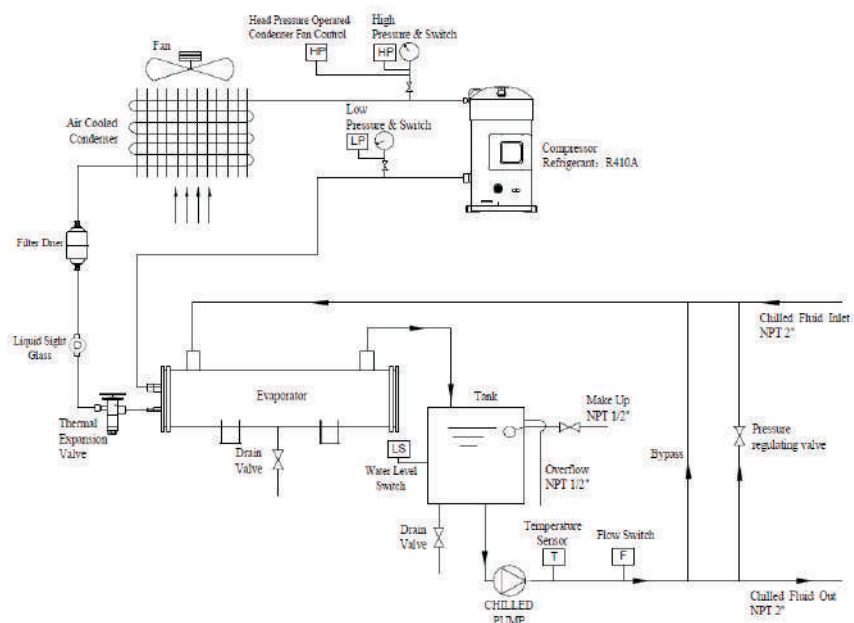
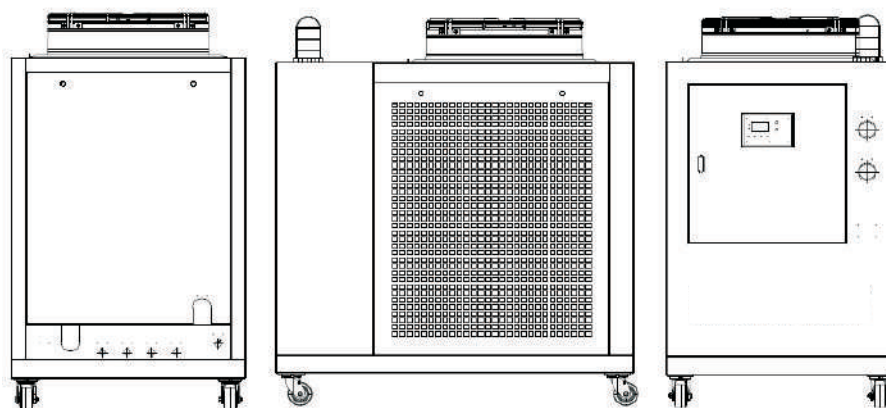
[www.drycoolchillers.com](http://www.drycoolchillers.com)

**TOLL FREE CUSTOMER CARE NO. 9811657548**

Water Pump	Flow	LPM	105
	Head	PSI	46.4
	LRA	A	13.2
	Power	HP	1.50
Water Tank	Capacity	LTR.	150
Sound Pressure at 1 meter	DBA		72
Programming Controller	Display	LCD display	
	Controller	microcomputer controller	
	Temp Control Range °C	+41 ~+95	
	Temp Control Accuracy °C	±3.6	
Dimensions	inches (LxWxH)		59x37x67
Weight	KG		370(For Reference)

## NOTES:

- 1 Cooling capacity based on 5°C(41°C) leaving coolant and 35°C(95°C) ambient air.  
Chilled water work allowed temperature range: 5 °C~35°C (41°F ~95°F).
- 2 Chilled water in and out temperature difference: 3 °C ~ 8°C (5.4°C ~ 14.4°C);  
Allowed ambient temperature range: -20 °C ~ 40°C (-4°C ~ 104°C).  
Power supply: 3PH-415V-50HZ , Allowing the voltage fluctuate ±10%, allow phase voltage difference ±2%, Allow the frequency range ±0.2Hz.
- 3



## GA DRAWING

### CAPACITY - 10 TR AIR COOLED WATER CHILLER

DWCS/DSG/258 - SS AIR COOLED

DATE : 11/06/2023

SIGN

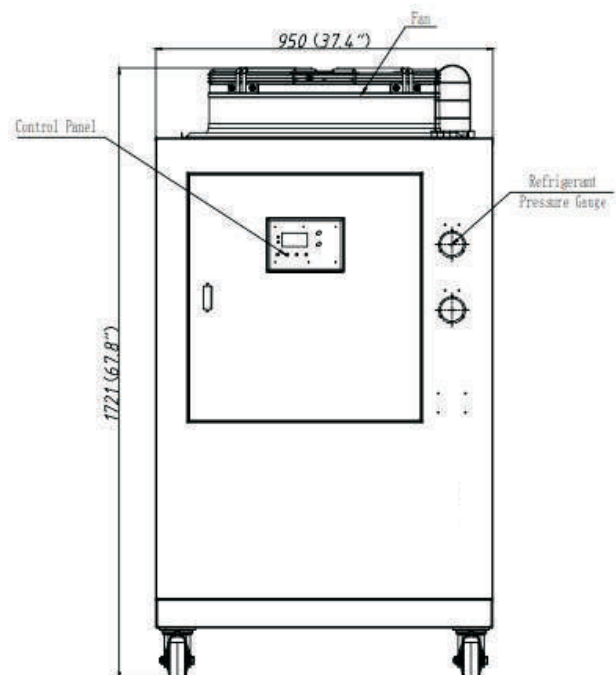
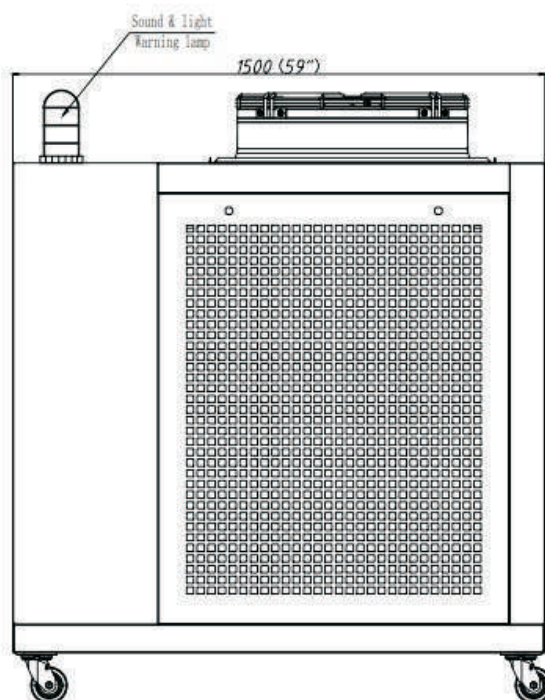
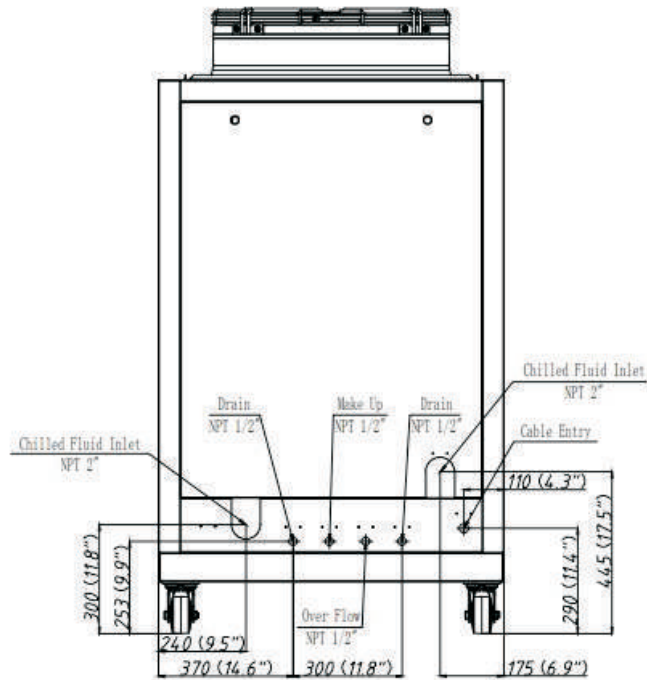
DRN Kapil Sharma

DSGN

CHKD Vatsal Verma

APPD

.



## CAPACITY - 15 TR AIR COOLED WATER CHILLER

DWCS/DSG/296 - SS AIR COOLED

### PHYSICAL DATA

Cooling Capacity	kcal/h		46500
	BTU/h		184800
	Nominal Capacity	RT	15.4
	Outlet Water Temp.	°C	10
	Condensation Temp.	°C	50
Power Supply			3PH-415V-50HZ
Max Amp		A	40
Total Power Input		HP	30
Power Supply Cable Diameter		mm <sup>2</sup>	AWG 7
Safety Protection Device			Overload, Inverse Phase, High/Low Pressure, Water Flow, Water Level & Anti-Freeze Protection
Refrigerant	Type		R410A
	Charge	Lbs	15.0
Compressor	Start Mode		Direct start
	Type		Scroll Type
	Qty		2
	HP		12x2
	RLA (Rated Load Amp)		13.5x2
	LRA(Locked Rotor Amp)		130x2
Fan	Qty		2
	Type		External Rotar Axial Fan
	Power	HP	1.13x2
	Current	A	1.3x2
	LRA	A	8x2
	Volume Air Flow	CFM	15882
Condenser	Type		MCHE
	Subcooling	K	2
	Heat Rejection	BTU/h	255000
Evaporator	Type		SS304 Shell and Cu Tubes
	Superheat	K	7
	Heat Rejection	BTU/h	184,800
	Cooled Water Flow	GPM	41
	Water Pressure Drop	PSI	12
Energy Adjust Mode			100%-50%-0%
Throttling Device	Mode		thermal expansion valve
Pipe	Water Outlet		MNPT 2"
	Water Inlet		MNPT 2"

Tel.: +91-0120-4246651 • Cell No. : 98111-27340, 98111-60920

E-mail : dcsipl@hotmail.com / vatsal.verma@drycoolchillers.com • CIN : U29192DL1999PTC100034

[www.drycoolchillers.com](http://www.drycoolchillers.com)

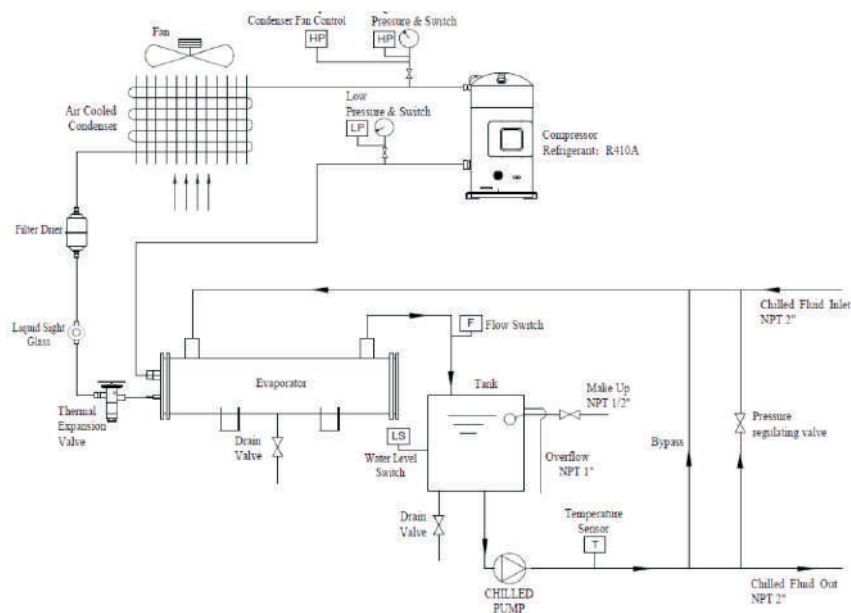
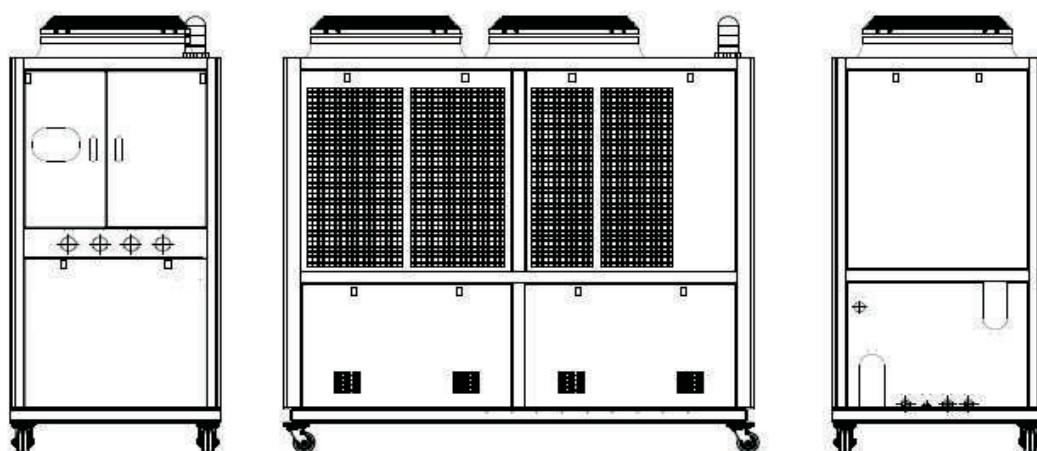
**TOLL FREE CUSTOMER CARE NO. 9811657548**



Water Pump	Flow	LPM	156
	Head	PSI	72.0
	LRA	A	36.50
	Power	HP	4.00
Water Tank	Capacity	LTR.	250
Sound Pressure at 1 meter	DBA		72
Programming Controller	Display	LCD display	
	Controller	microcomputer controller	
	Temp Control Range °C	+41 ~+95	
	Temp Control Accuracy °C	±3.6	
Dimensions	inches (LxWxH)		88x39x87
Weight	KG		520(For Reference)

## NOTES:

- 1 Cooling capacity based on 5°C(41°C) leaving coolant and 35°C(95°C) ambient air.  
Chilled water work allowed temperature range: 5 °C~35°C (41°F ~95°F).
- 2 Chilled water in and out temperature difference: 3 °C ~ 8°C (5.4°C ~ 14.4°C);  
Allowed ambient temperature range: -20 °C ~ 40°C (-4°C ~ 104°C).  
Power supply: 3PH-415V-50HZ , Allowing the voltage fluctuate ±10%, allow phase voltage difference ±2%, Allow the frequency range ±0.2Hz.
- 3



## GA DRAWING

### CAPACITY - 15 TR AIR COOLED WATER CHILLER

DWCS/DSG/296 - SS AIR COOLED

DATE : 11/06/2023

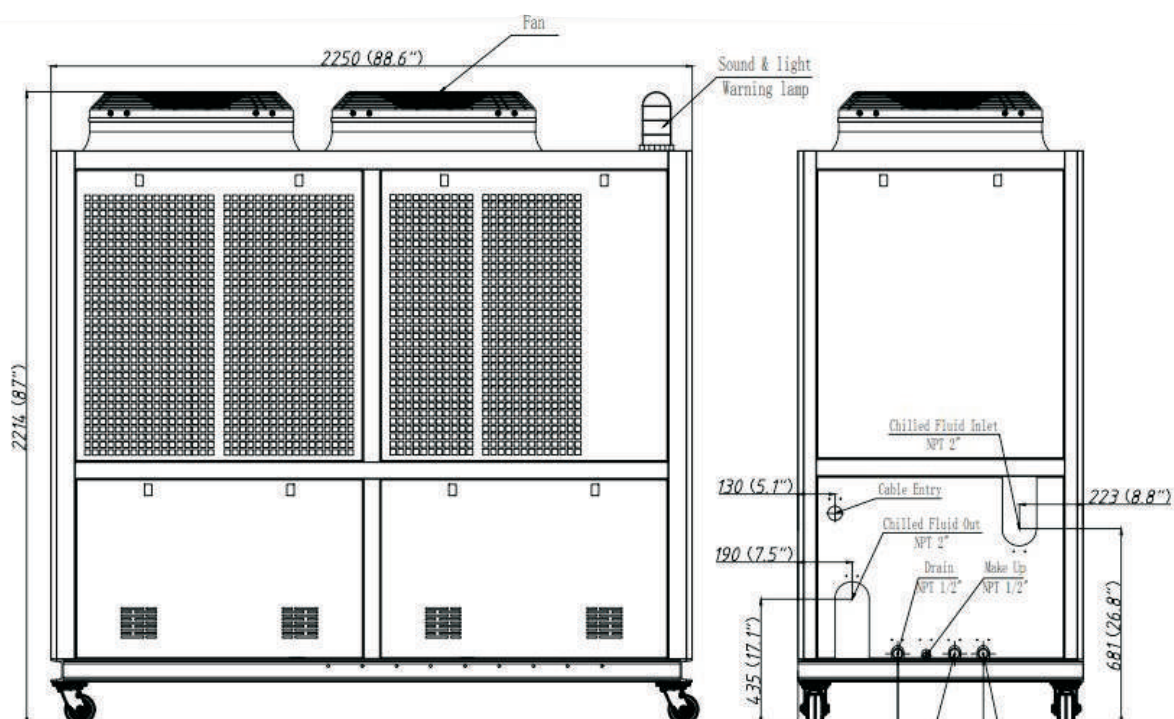
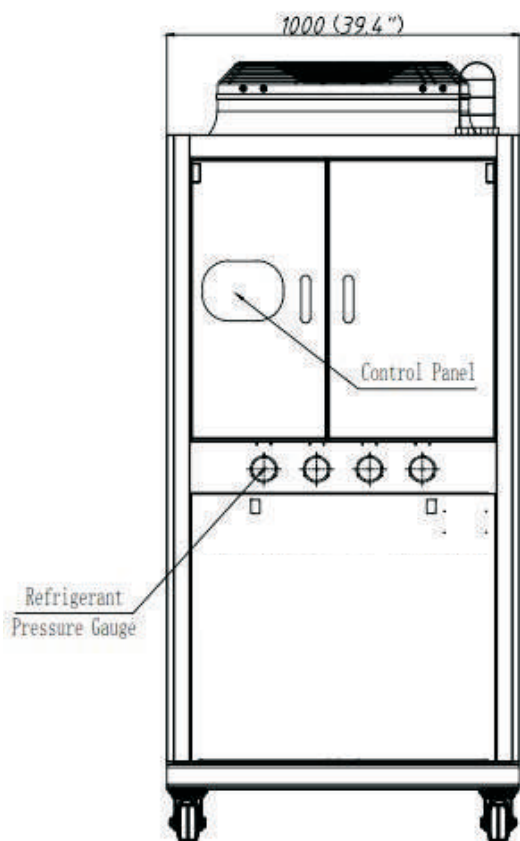
SIGN

DRN Kapil Sharma

DSGN .

CHKD Vatsal Verma

APPD .



## CAPACITY - 20 TR AIR COOLED WATER CHILLER

DWCS/DSG/351 - SS AIR COOLED

### PHYSICAL DATA

Cooling Capacity	kcal/h		63100
	BTU/h		250400
	Nominal Capacity	RT	20
	Outlet Water Temp.	°C	10
	Condensation Temp.	°C	50
Power Supply			3PH-415V-50HZ
Max Amp		A	45
Total Power Input		HP	36
Power Supply Cable Diameter		mm <sup>2</sup>	AWG 7
Safety Protection Device			Overload, Inverse Phase, High/Low Pressure, Water Flow, Water Level & Anti-Freeze Protection
Refrigerant	Type		R410A
	Charge	Lbs	20.0
Compressor	Start Mode		Direct start
	Type		Scroll Type
	Qty		2
	HP		15x2
	RLA (Rated Load Amp)		16.7x2
	LRA(Locked Rotor Amp)		125x2
Fan	Qty		2
	Type		External Rotar Axial Fan
	Power	HP	1.13x2
	Current	A	1.3x2
	LRA	A	8x2
	Volume Air Flow	CFM	14100
Condenser	Type		MCHE
	Subcooling	K	2
	Heat Rejection	BTU/h	322000
Evaporator	Type		SS304 Shell and Cu Tubes
	Superheat	K	7
	Heat Rejection	BTU/h	250,400
	Cooled Water Flow	GPM	55.5
	Water Pressure Drop	PSI	12
Energy Adjust Mode			100%-50%-0%
Throttling Device	Mode		thermal expansion valve
Pipe	Water Outlet		MNPT 2"
	Water Inlet		MNPT 2"

Tel.: +91-0120-4246651 • Cell No. : 98111-27340, 98111-60920

E-mail : dcsipl@hotmail.com / vatsal.verma@drycoolchillers.com • CIN : U29192DL1999PTC100034

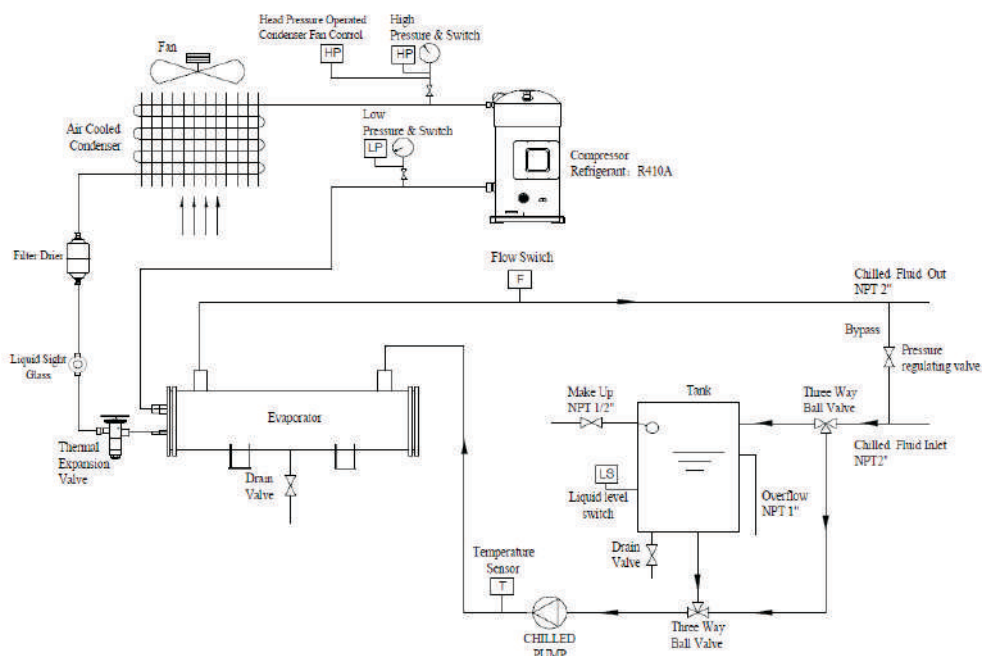
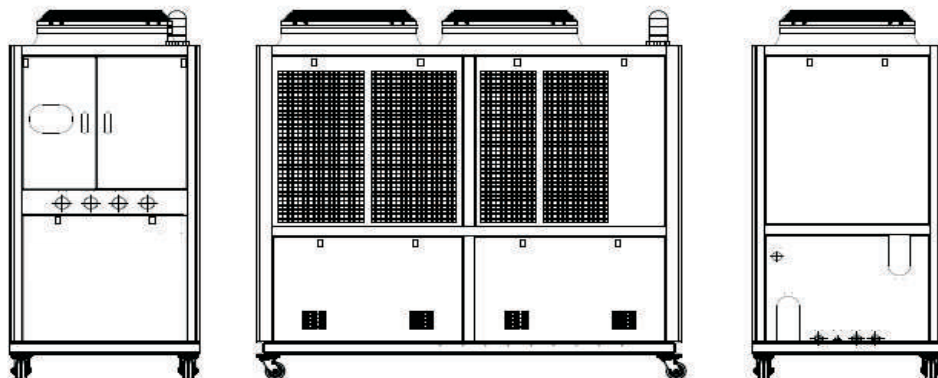
[www.drycoolchillers.com](http://www.drycoolchillers.com)

**TOLL FREE CUSTOMER CARE NO. 9811657548**

Water Pump	Flow	LPM	210
	Head	PSI	68.0
	LRA	A	36.5
	Power	HP	4.00
Water Tank	Capacity	LTR.	250
Sound Pressure at 1 meter	DBA		74
Programming Controller	Display		LCD display
	Controller		microcomputer controller
	Temp Control Range °C		+41 ~+95
	Temp Control Accuracy °C		±3.6
Dimensions	inches (LxWxH)		88x39x87
Weight	KG.		520(For Reference)

## NOTES:

- 1 Cooling capacity based on 5°C(41°C) leaving coolant and 35°C(95°C) ambient air.  
  
Chilled water work allowed temperature range: 5 °C~35°C (41°F ~95°F).
- 2 Chilled water in and out temperature difference: 3 °C ~ 8°C (5.4°C ~ 14.4°C);  
Allowed ambient temperature range: -20 °C ~ 40°C (-4°C ~ 104°C).  
  
Power supply: 3PH-415V-50HZ , Allowing the voltage fluctuate ±10%, allow phase voltage difference ±2%, Allow the frequency range ±0.2Hz.
- 3



## GA DRAWING

### CAPACITY - 20 TR AIR COOLED WATER CHILLER

DWCS/DSG/351 - SS AIR COOLED

DATE : 11/06/2023

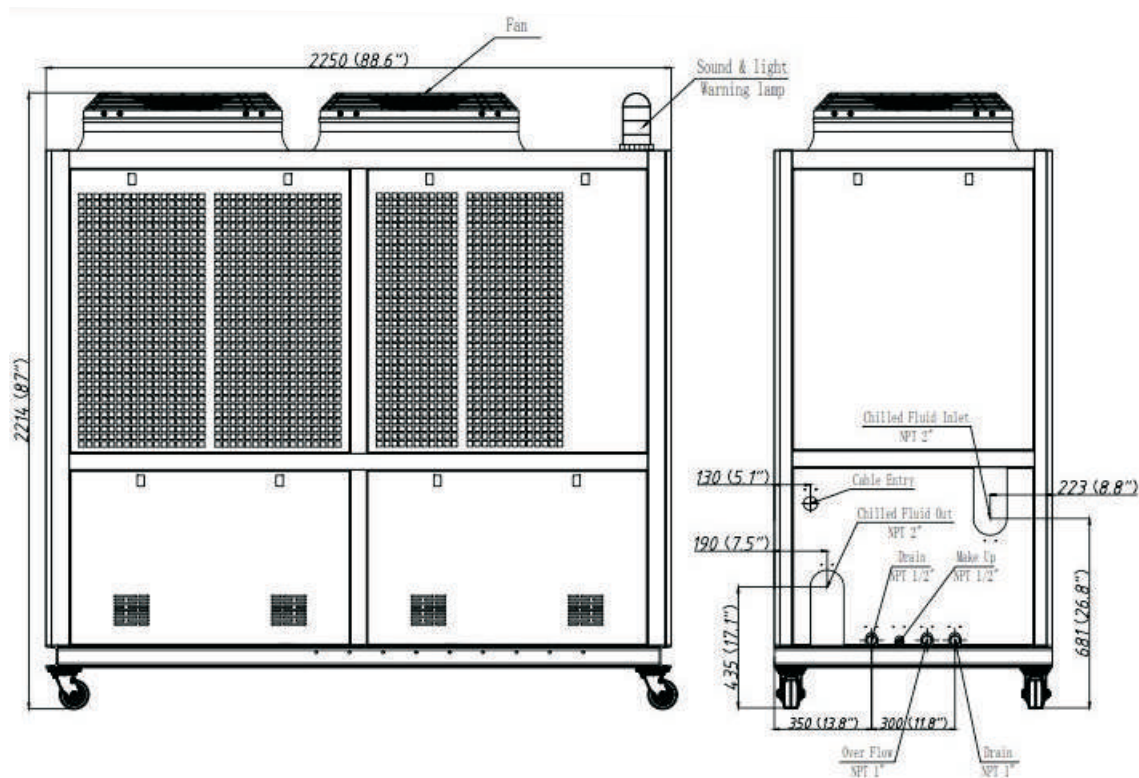
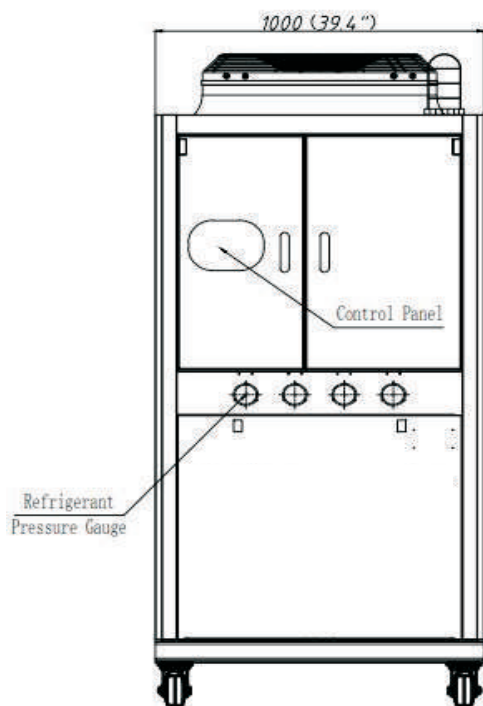
SIGN

DRN Kapil Sharma

DSGN .

CHKD Vatsal Verma

APPD .





## CAPACITY - 30 TR AIR COOLED WATER CHILLER

DWCS/DSG/491 - SS AIR COOLED

### PHYSICAL DATA

Cooling Capacity	kcal/h		93200
	BTU/h		369900
	Nominal Capacity	RT	30
	Outlet Water Temp.	°C	10
	Condensation Temp.	°C	50
Power Supply			3PH-415V-50HZ
Max Amp		A	83
Total Power Input		HP	67
Power Supply Cable Diameter		mm <sup>2</sup>	3x35+2x16
Safety Protection Device			Overload, Inverse Phase, High/Low Pressure, Water Flow, Water Level & Anti-Freeze Protection
Refrigerant	Type		R410A
	Charge	Lbs	40.0
Compressor	Start Mode		Direct start
	Type		Scroll Type
	Qty		4
	HP		13.5x4
	RLA (Rated Load Amp)		15.1x4
	LRA(Locked Rotor Amp)		125x4
Fan	Qty		4
	Type		External Rotar Axial Fan
	Power	HP	1.13x4
	Current	A	1.27x4
	LRA	A	8x4
	Volume Air Flow	CFM	29964
Condenser	Type		MCHE
	Subcooling	K	2
	Heat Rejection	BTU/h	496000
Evaporator	Type		SS304 Shell and Cu Tubes
	Superheat	K	7
	Heat Rejection	BTU/h	369,900
	Cooled Water Flow	GPM	82
	Water Pressure Drop	PSI	12
Energy Adjust Mode			100%-50%-25%-0%
Throttling Device	Mode		thermal expansion valve
Pipe	Water Outlet		MNPT 3"
	Water Inlet		MNPT 3"

Tel.: +91-0120-4246651 • Cell No. : 98111-27340, 98111-60920

E-mail : dcsipl@hotmail.com / vatsal.verma@drycoolchillers.com • CIN : U29192DL1999PTC100034

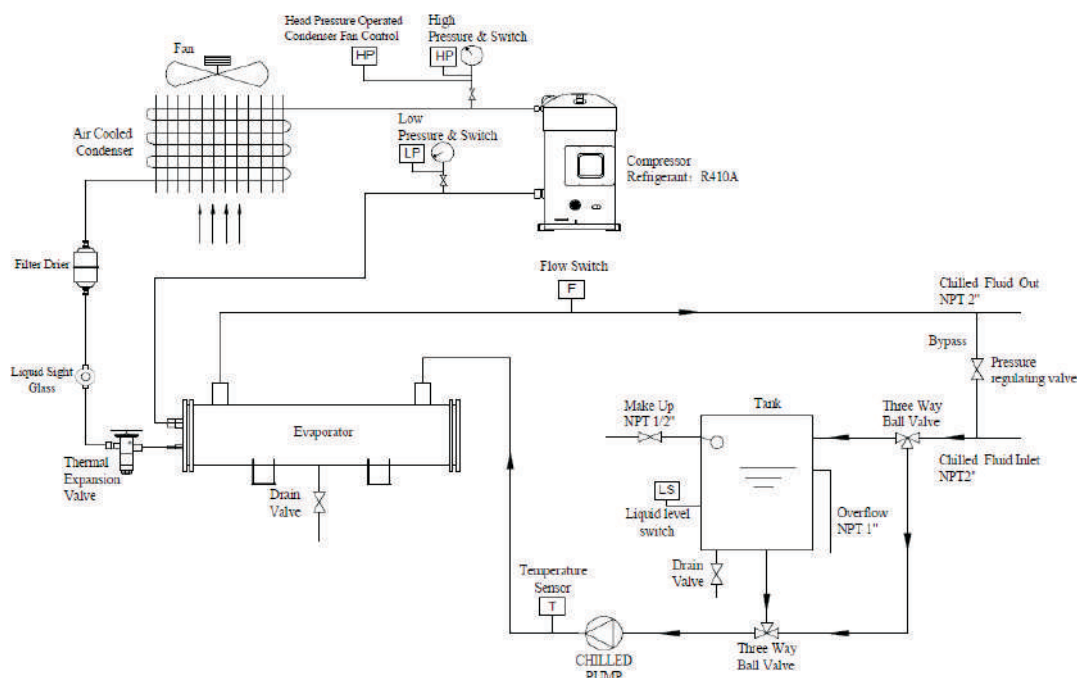
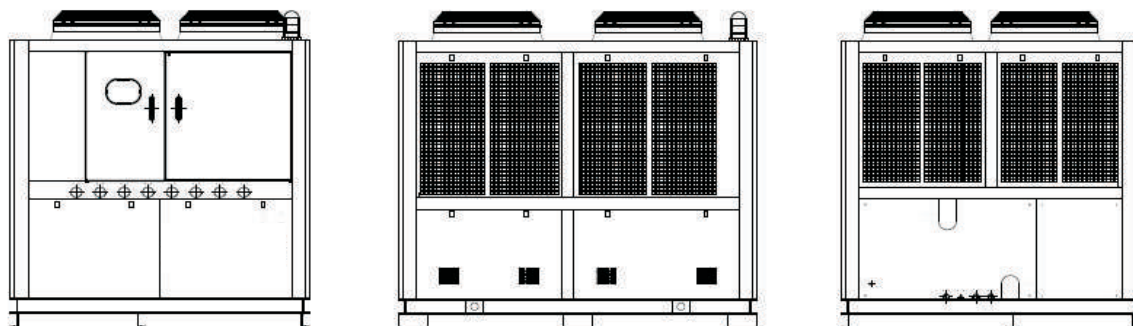
[www.drycoolchillers.com](http://www.drycoolchillers.com)

**TOLL FREE CUSTOMER CARE NO. 9811657548**

Water Pump	Flow	LPM	310
	Head	PSI	50.8
	LRA	A	48.6
	Power	HP	5.50
Water Tank	Capacity	LTR.	350
Sound Pressure at 1 meter	DBA		75
Programming Controller	Display	LCD display	
	Controller	microcomputer controller	
	Temp Control Range °C	+41 ~+95	
	Temp Control Accuracy °C	±3.6	
Dimensions	inches (LxWxH)		94x78x86
Weight	KG		1348(For Reference)

## NOTES:

- 1 Cooling capacity based on 5°C(41°C) leaving coolant and 35°C(95°C) ambient air.  
Chilled water work allowed temperature range: 5 °C~35°C (41°F ~95°F).
- 2 Chilled water in and out temperature difference: 3 °C ~ 8°C (5.4°C ~ 14.4°C);  
Allowed ambient temperature range: -20°C ~ 40°C (-4°C ~ 104°C).  
Power supply: 3PH-415V-50HZ , Allowing the voltage fluctuate ±10%, allow phase voltage difference ±2%, Allow the frequency range ±0.2Hz.
- 3



## GA DRAWING

### CAPACITY - 30 TR AIR COOLED WATER CHILLER

DWCS/DSG/491 - SS AIR COOLED

DATE : 11/06/2023

SIGN

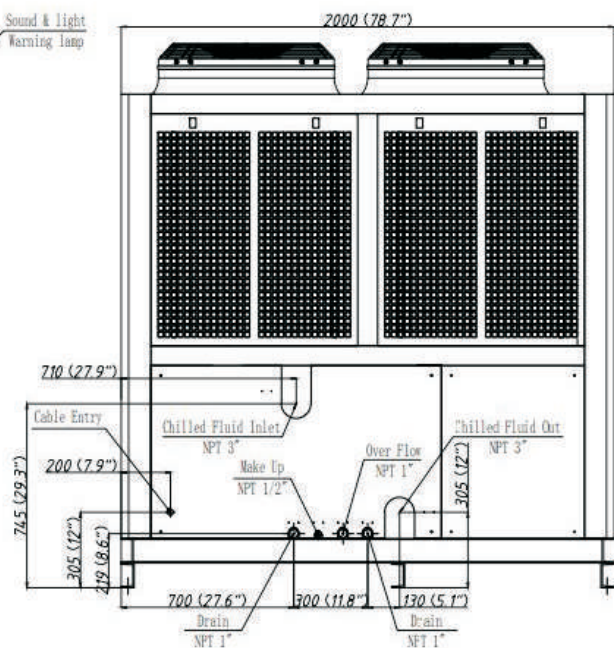
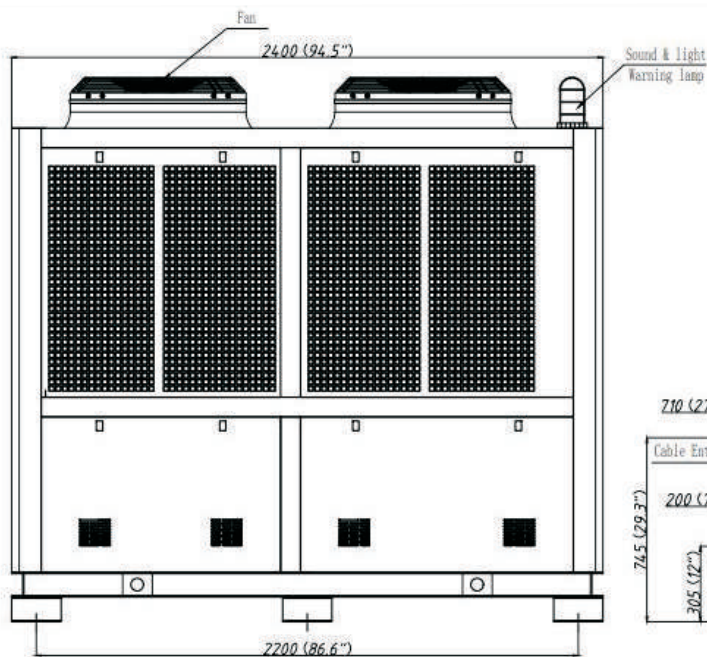
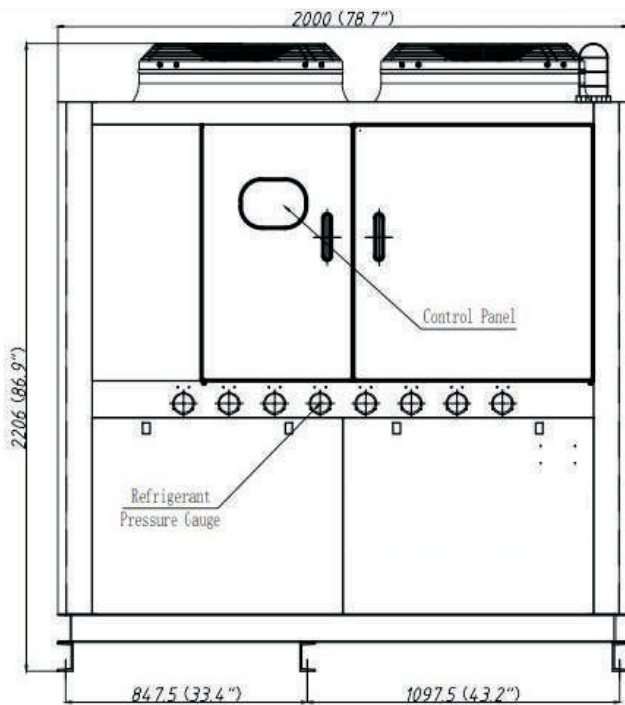
DRN Kapil Sharma

DSGN

Vatsal Verma

CHKD

APPD



**CAPACITY - 40 TR AIR COOLED WATER CHILLER**

DWCS-40AC - SS AIR COOLED  
PHYSICAL DATA

Cooling Capacity	kcal/h		126200
	BTU/h		500900
	Nominal Capacity	RT	40
	Outlet Water Temp.	°C	10
	Condensation Temp.	°C	50
Power Supply			3PH-415V-50HZ
Max Amp		A	90
Total Power Input		HP	75
Power Supply Cable Diameter		mm <sup>2</sup>	3x35+2x10
Safety Protection Device			Overload, Inverse Phase, High/Low Pressure, Water Flow, Water Level & Anti-Freeze Protection
Refrigerant	Type		R410A
	Charge	Lbs	44.0
Compressor	Start Mode		Direct start
	Type		Scroll Type
	Qty		4
	HP		15x4
	RLA (Rated Load Amp)		16.7x4
	LRA(Locked Rotor Amp)		125x4
Fan	Qty		4
	Type		External Rotar Axial Fan
	Power	HP	1.13x4
	Current	A	1.27x4
	LRA	A	8x4
	Volume Air Flow	CFM	29964
Condenser	Type		MCHE
	Subcooling	K	2
	Heat Rejection	BTU/h	648300
Evaporator	Type		SS304 Shell and Cu Tubes
	Superheat	K	7
	Heat Rejection	BTU/h	500,900
	Cooled Water Flow	GPM	112.1
	Water Pressure Drop	PSI	12
Energy Adjust Mode			100%-50%-25%-0%
Throttling Device	Mode		thermal expansion valve
Pipe	Water Outlet		MNPT 3"
	Water Inlet		MNPT 3"

Tel.: +91-0120-4246651 • Cell No. : 98111-27340, 98111-60920

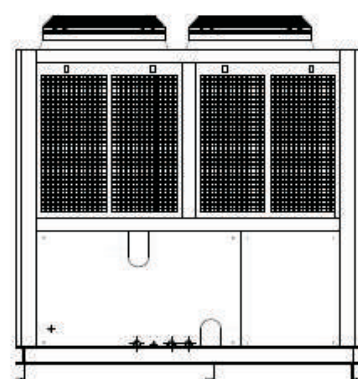
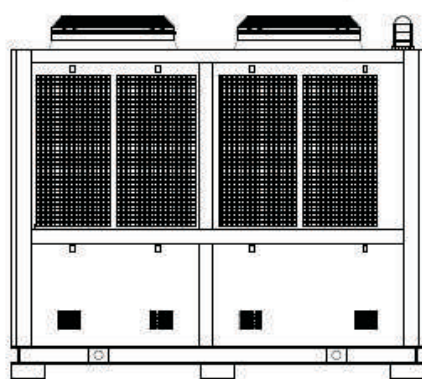
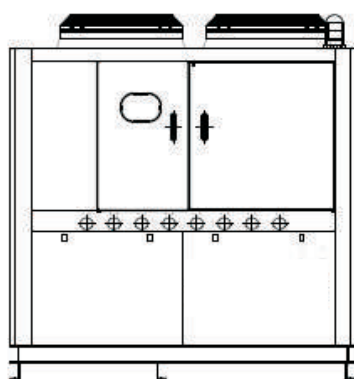
E-mail : dcsipl@hotmail.com / vatsal.verma@drycoolchillers.com • CIN : U29192DL1999PTC100034

[www.drycoolchillers.com](http://www.drycoolchillers.com)**TOLL FREE CUSTOMER CARE NO. 9811657548**

Water Pump	Flow	LPM	423
	Head	PSI	65.0
	LRA	A	66
	Power	HP	7.50
Water Tank	Capacity	LTR.	500
Sound Pressure at 1 meter	DBA		75
Programming Controller	Display		LCD display
	Controller		microcomputer controller
	Temp Control Range °C		+41 ~+95
	Temp Control Accuracy °C		±3.6
Dimensions	inches (LxWxH)		94x78x86
Weight	KG		1376(For Reference)

## NOTES:

- 1 Cooling capacity based on 5°C(41°C) leaving coolant and 35°C(95°C) ambient air.  
Chilled water work allowed temperature range: 5 °C~35°C (41°F ~95°F).
- 2 Chilled water in and out temperature difference: 3 °C ~ 8°C (5.4°C ~ 14.4°C);  
Allowed ambient temperature range: -20°C ~ 40°C (-4°C ~ 104°C).  
Power supply: 3PH-415V-50HZ , Allowing the voltage fluctuate ±10%, allow phase voltage difference ±2%, Allow the frequency range ±0.2Hz.
- 3





## GA DRAWING

### CAPACITY - 40 TR AIR COOLED WATER CHILLER

DATE : 11/06/2023

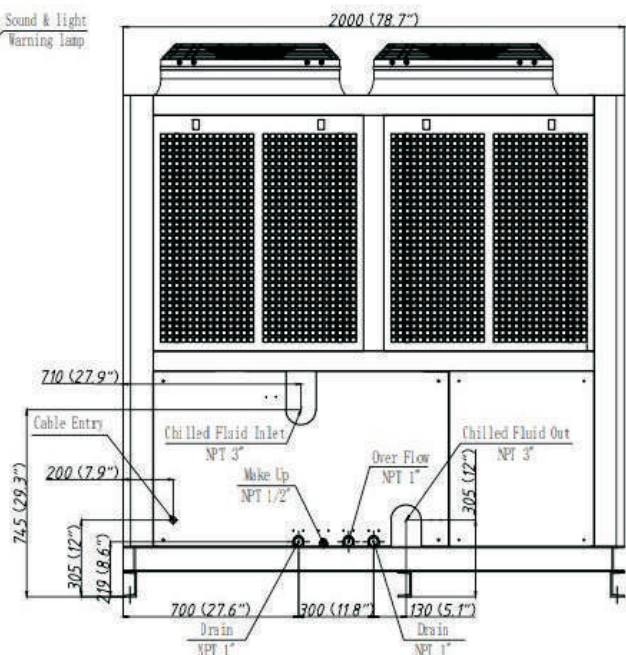
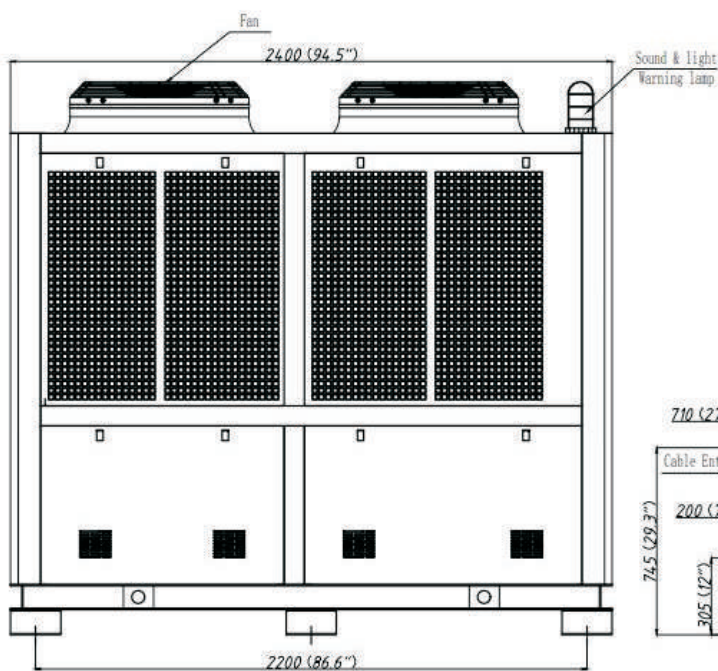
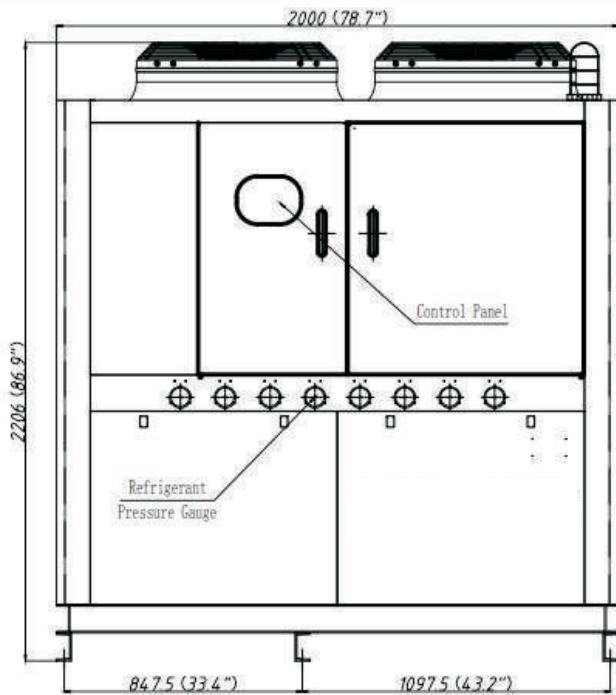
SIGN

DRN Kapil Sharma

DSGN .

CHKD Vatsal Verma

APPD .






ISO 9001-2015 Company

# **DRYCOOL Systems India (P) Ltd**

**Unit-I : C-34, Sector 63, Noida-201307 (U.P.) India**

**Unit-II : B-64, M.G. Road Indl. Area, Hapur-245101 (U.P.) India**

 **+91-9811127340, +91-9811160920**

 **0120-4246651**

 **dcsipl@hotmail.com**

**vatsal.verma@drycoolchillers.com**

**yash@drycoolchillers.com**

 **www.drycoolchillers.com, www.drycoolintelligence.com**